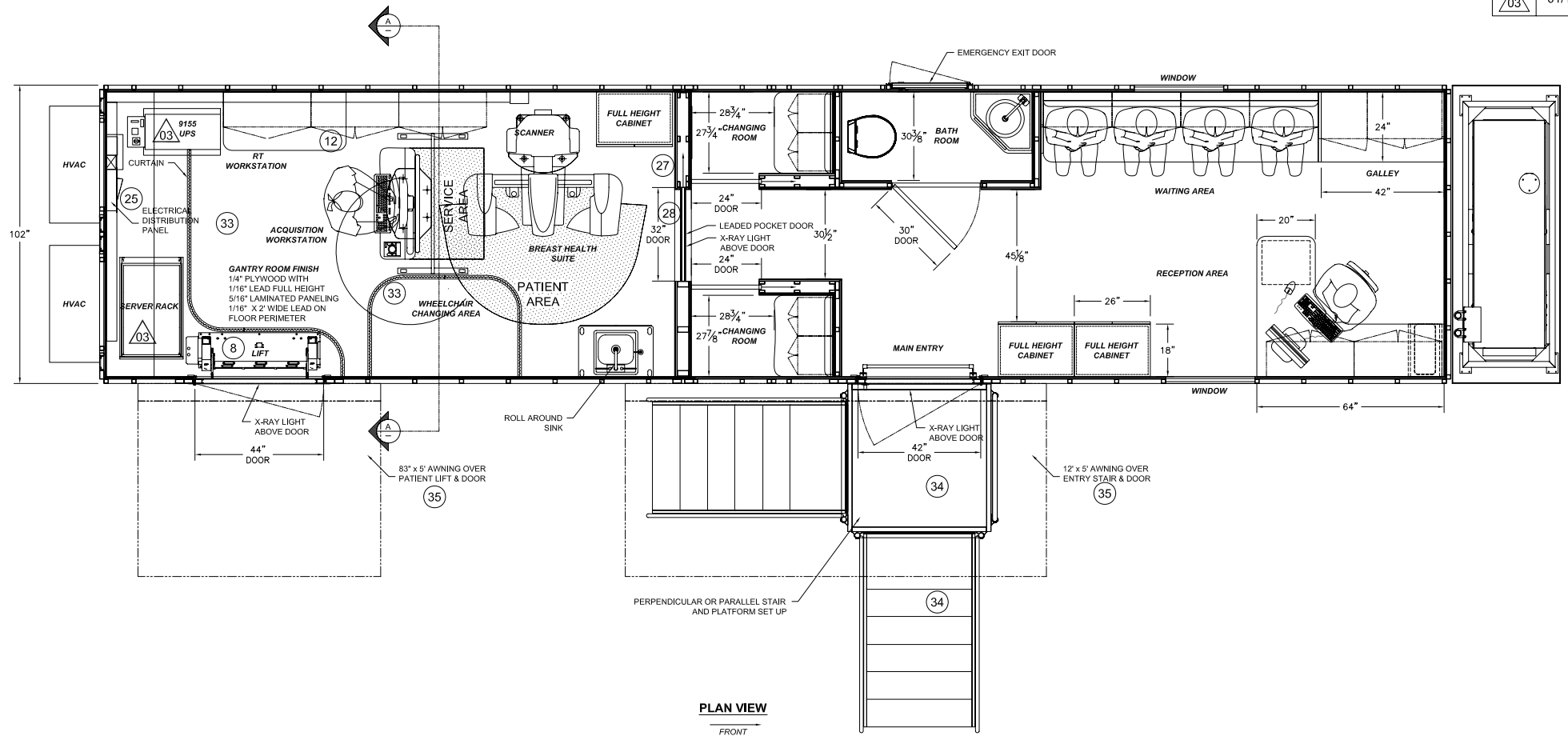
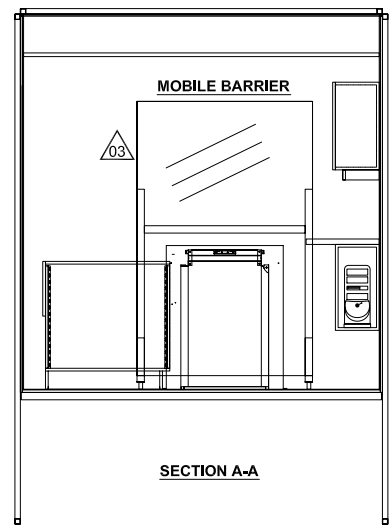


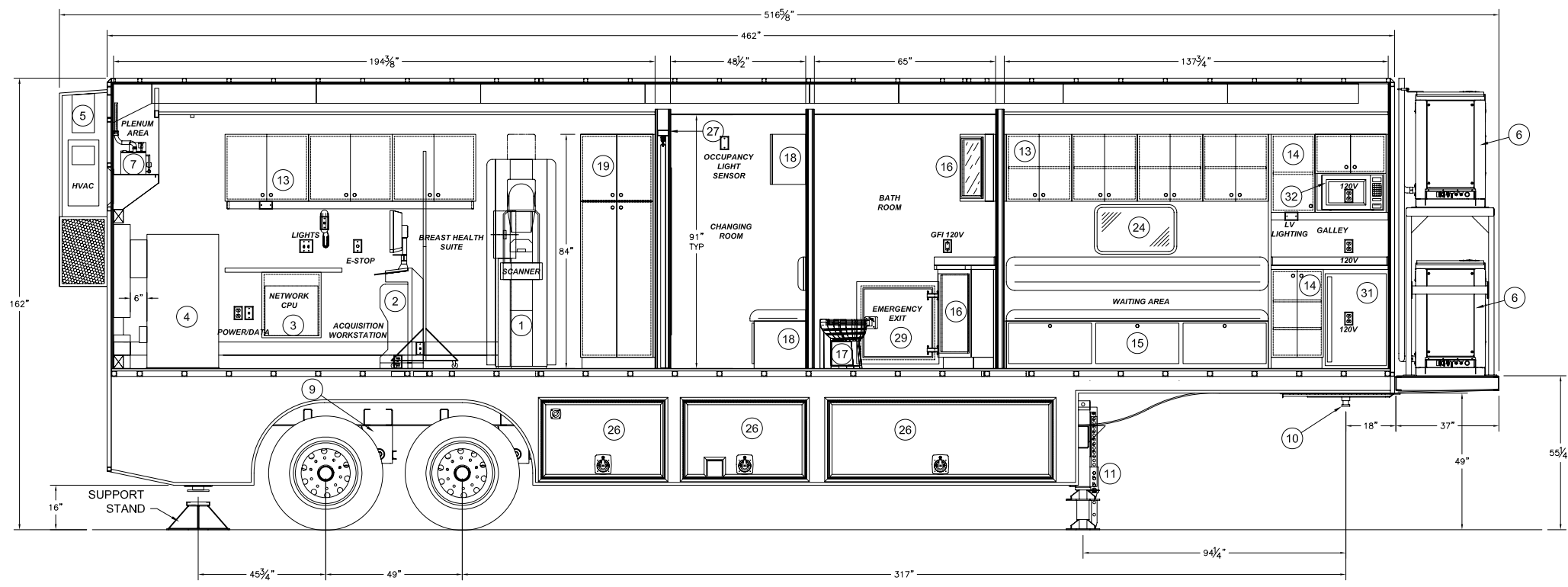
REVISIONS					DESCRIPTION
REV.	REV. DATE	CHK. BY	CHK. DATE	ENG.	
03	01/17/08	DB	01/17/08	W.L.	SHOWED UPS AND MIMS OPTION ALSO MOBILE BARRIER LEAD SHIELD



**PLAN VIEW**  
FRONT



**SECTION A-A**



**LEFT ELEVATION VIEW**  
FRONT

35	2	ELECTRIC AWNINGS
34	1	PERPENDICULAR OR PARALLEL STAIR
33	2	CURTAINS
32	1	MICROWAVE
31	1	REFRIGERATOR
30	1	ROLL AROUND SINK
29	1	EMERGENCY EXIT HATCH
28	1	LEADED SLIDING DOOR(1/16" THICK LEAD)
27	1	LEADED PARTITION WALL (1/16" THICK LEAD)
26	6	LOWER COMPARTMENT DOORS (3-PS / 3-DS)
25	1	ELECTRICAL SERVICE PANEL (208V-3 PHASE)
24	2	WINDOWS 5980 SERIES (29-5/8" W x 17-3/4" H)
23	1	44" x 80" WHEELCHAIR LIFT DOOR
22	1	42" x 80" ENTRY DOOR
21	2	RECEPTIONIST OVERHEAD CABINETS
20	1	RECEPTIONIST AREA COMPUTER CABINET/ FILE CABINET
19	3	FULL HIEGHT STORAGE CABINETS
18	2	SEATED CHANGING AREA
17	1	TOLIET
16	1	SINK CABINET WITH OVERHEAD
15	1	BENCH SEAT WITH UNDER SEAT STORAGE
14	1	GALLEY OVERHEAD CABINETS AND BASE CABINET
13	7	OVERHEAD STORAGE CABINETS
12	2	WORK COUNTER
11	2	EQUILIZER LEVELING LEGS, 25,000 LB. CAP.
10	1	AIR RIDE UPPER COUPLER (KING PIN)
9	2	AIR RIDE SUSPENSION, 44,000 LB. CAP.
8	1	RICON WHEELCHAIR LIFT (S5505)
7	1	DRY STEAM HUMIDIFIER
6	2	40KW DIESEL GENERATOR
5	2	36,000 BTU AIR CONDITIONER
4	1	10 KVA UPS
3	1	CADD STATION R2
2	1	ACQUISITION WORKSTATION SHIELD OPTIONAL SWING ARM
1	1	THE SELENIA GANTRY AND C-ARM

THIS DRAWING IS PROVIDED ON A CONFIDENTIAL BASIS SUBJECT TO RETURN ON DEMAND OF OSHKOSH SPECIALTY VEHICLES ("OSHKOSH"), WHICH RETAINS ANY AND ALL RIGHTS ASSOCIATED WITH IT AND THE ARTICLE OR ARTICLES IT REPRESENTS. DISCLOSURE, REPRODUCTION OR ALTERATION OF ANY PART OF THIS DRAWING, OR MANUFACTURE, USE OR SALE OF THE ARTICLE OR ARTICLES REPRESENTED, IS PROHIBITED WITHOUT THE PRIOR WRITTEN AUTHORIZATION OF OSHKOSH. © OSHKOSH SPECIALTY VEHICLES (unpublished).

**CUSTOMER AUTHORIZATION**

COMPANY NAME: \_\_\_\_\_

NAME (PRINT): \_\_\_\_\_ TITLE: \_\_\_\_\_

SIGNATURE: \_\_\_\_\_ DATE: \_\_\_\_\_

SHEET NUMBER: SHEET 1 OF 2 REFERENCE DRAWING: P-02167-A01 TITLE: NEVADA HEALTH CENTERS GENERAL LAYOUT 38.5FT MAMMOGRAPHY (HOLOGIC SELENIA) TRAILER 102' x 162' x 462'

DATE: 10/03/07 SCALE: 1/2"=1'-0"

DRAWN BY: \_\_\_\_\_

CHECKED BY: \_\_\_\_\_

DRAWING NUMBER: 10296-A01

**OSHKOSH SPECIALTY VEHICLES**

16745 S. LATHROP AVENUE HARVEY, IL. 60426 PHONE: (708) 596-5066 FAX: (708) 596-2480