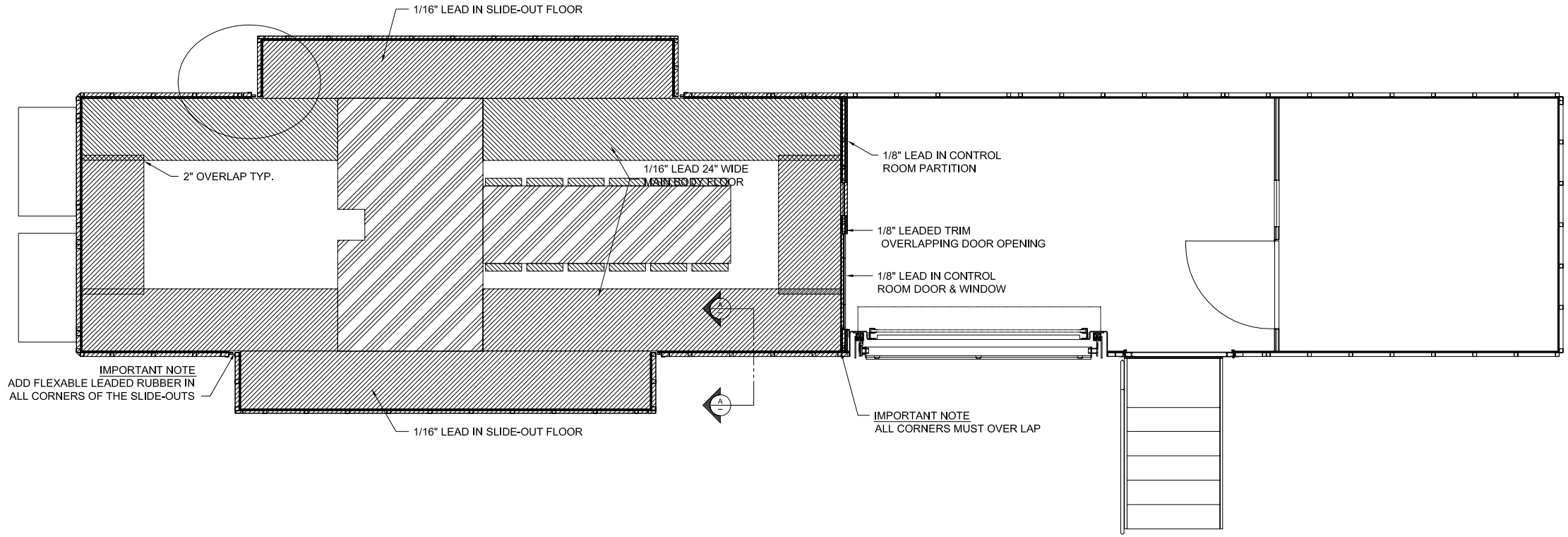


REVISIONS					
REV.	REV. DATE	CHK. BY	CHK. DATE	ENG.	DESCRIPTION
08	30NOV06	DAR	30NOV06	W.L.	SHOWED LEAD BUTTED UP TO 3/4" STEEL PLATE



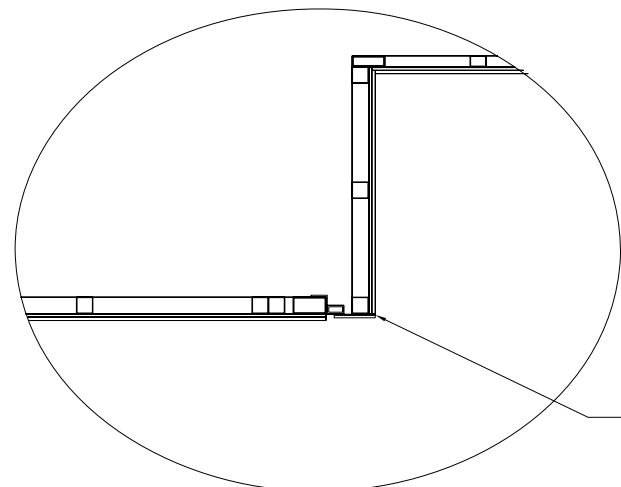
IMPORTANT NOTE
ADD FLEXIBLE LEADED RUBBER IN
ALL CORNERS OF THE SLIDE-OUTS

IMPORTANT NOTE
ALL CORNERS MUST OVER LAP

PLAN VIEW

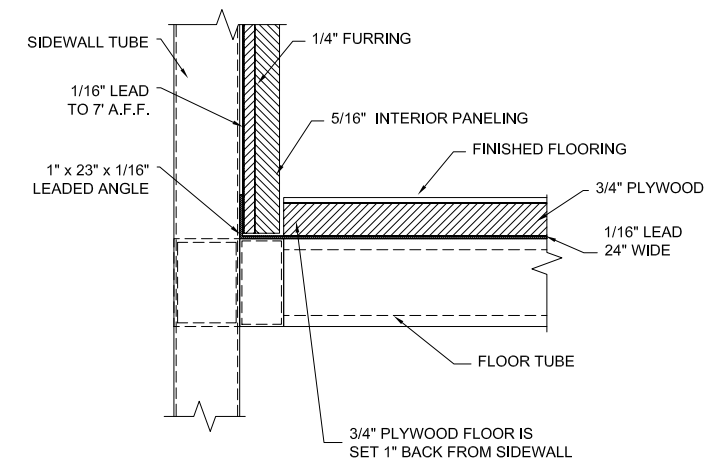
NOTE:

1. LEAD SHEET MATERIAL MUST BUTT TOGETHER WITH 2" STRIP BEHIND SPLICE IN SIDE WALLS .
2. LEAD IN GANTRY ROOM WALLS 1/16" 84" HEIGHT.
3. LEAD IN SLIDE OUTS 1/16" FULL HEIGHT.



DETAIL "A"

IMPORTANT NOTE
LEAD MATERIAL UNDERNEATH BAR STOCK



SECTION "A-A"
SCALE: 1:2

THIS DRAWING IS PROVIDED ON A CONFIDENTIAL BASIS SUBJECT TO RETURN ON DEMAND OF OSHKOSH SPECIALTY VEHICLES ("OSHKOSH"), WHICH RETAINS ANY AND ALL RIGHTS ASSOCIATED WITH IT AND THE ARTICLE OR ARTICLES IT REPRESENTS. DISCLOSURE, REPRODUCTION OR ALTERATION OF ANY PART OF THIS DRAWING; OR MANUFACTURE, USE OR SALE OF THE ARTICLE OR ARTICLES REPRESENTED, IS PROHIBITED WITHOUT THE PRIOR WRITTEN AUTHORIZATION OF OSHKOSH. © OSHKOSH SPECIALTY VEHICLES (unpublished).

CUSTOMER AUTHORIZATION	
COMPANY NAME:	
NAME (PRINT):	TITLE:
SIGNATURE:	DATE:

SHEET NUMBER: 1 OF 1	REFERENCE DRAWING:	TITLE: LEAD REQUIREMENTS - PLAN VIEW GE MEDICAL SYSTEMS LIGHTSPEED CT 8'-6" X 13'-6" X 48'-0" TRAILER	DATE: 08OCT03	SCALE: 1/2"=1'-0"
JOB#			CHECKED BY: 	DRAWING NUMBER: 10232-A18
			DRAWN BY: 	16745 S. LATHROP AVENUE HARVEY, IL, 60426 PHONE: (708) 596-5066 FAX: (708) 596-2480